

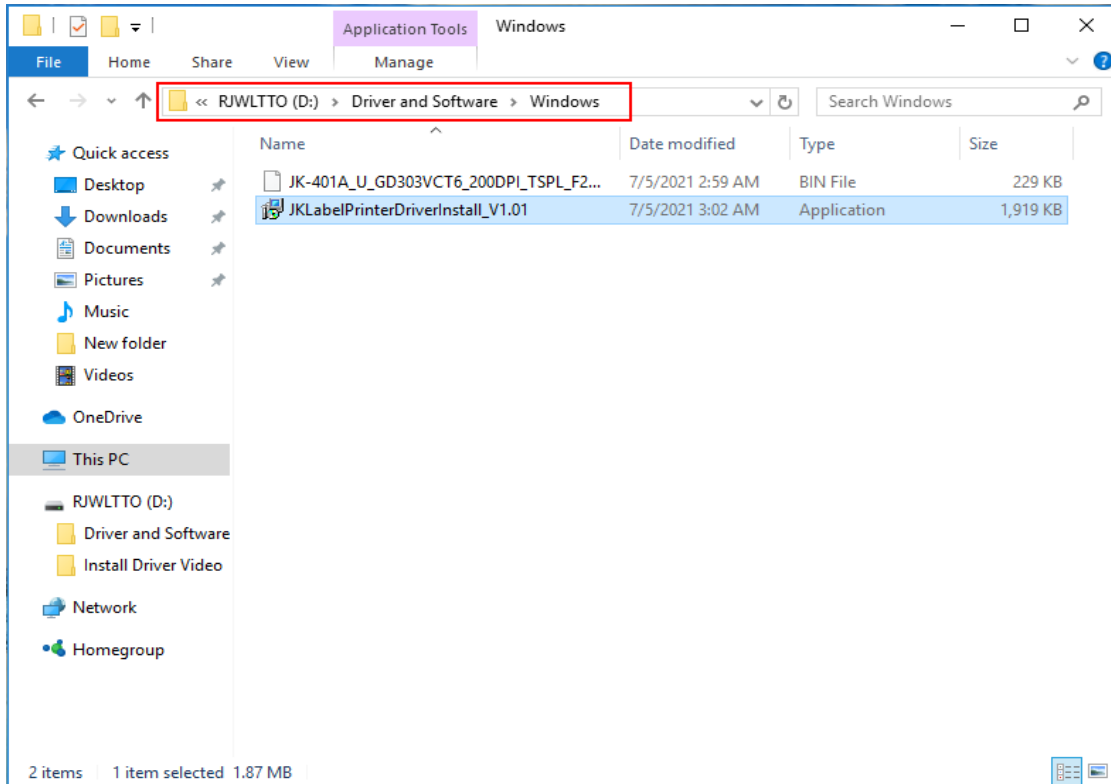
Label Printer


Driver Setup Manual

1. Windows Driver Installation

Before installing the printer driver, please connect your printer to the computer and make sure the power switch is turned on.

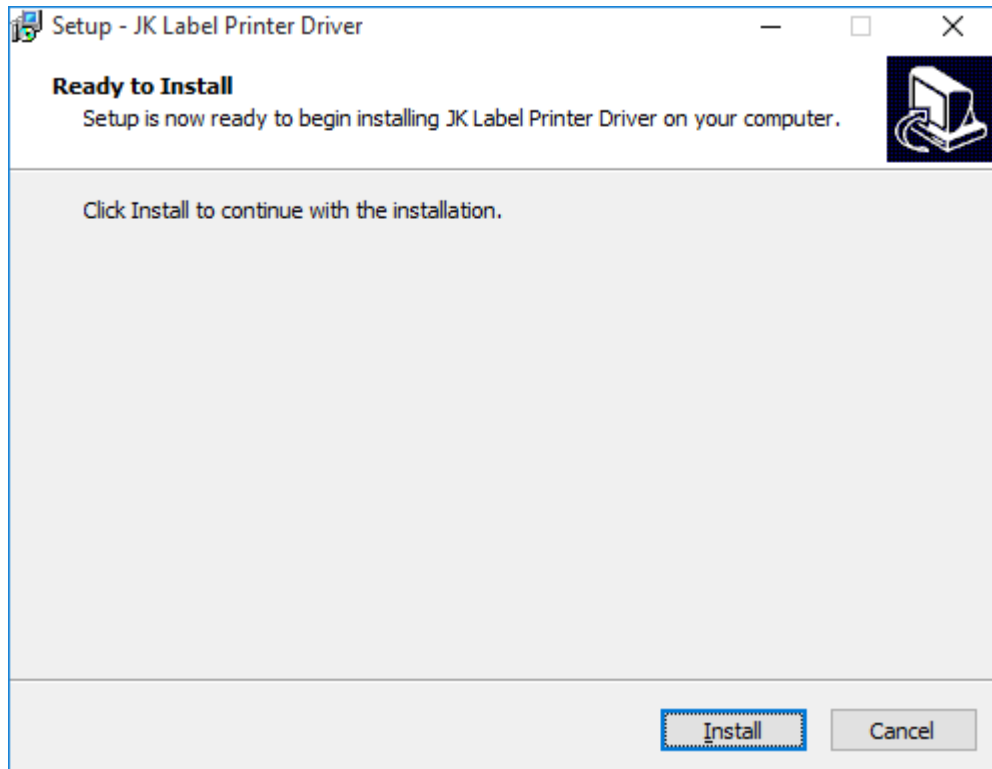
Insert the U disk on the computer and press the path shown in the figure below to locate the driver file "JKLabelPrinterDriverInstall_V1.01"



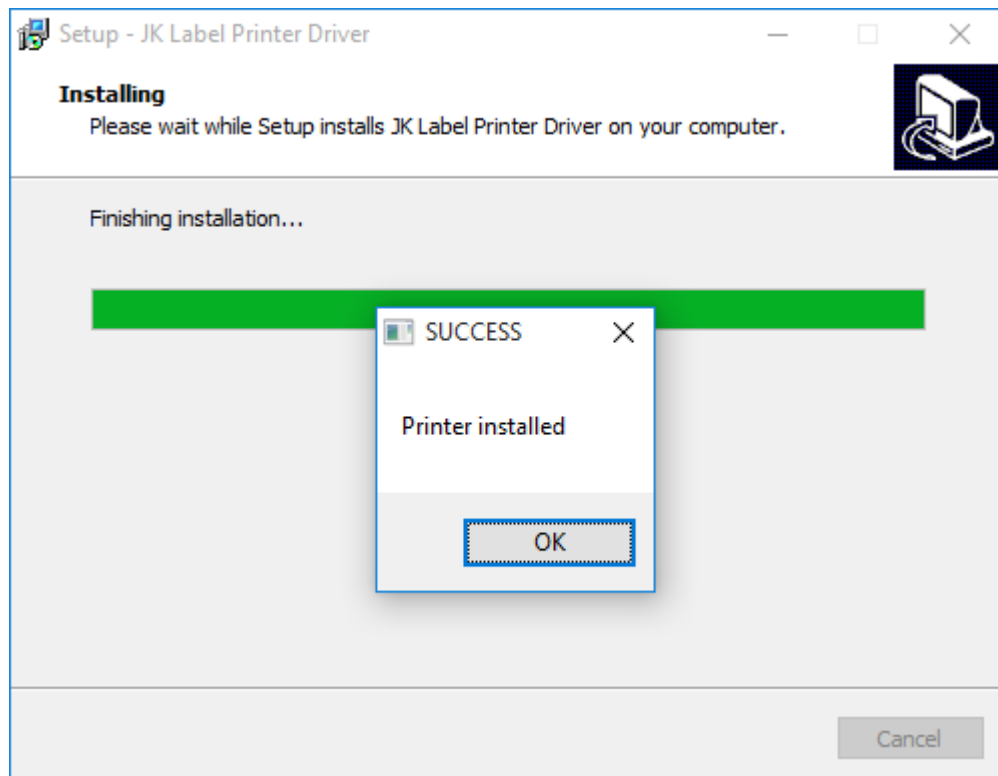
Double click the installation ,  JKLabelPrinterDriverInstall_V1.01 Then, it will show as below picture:



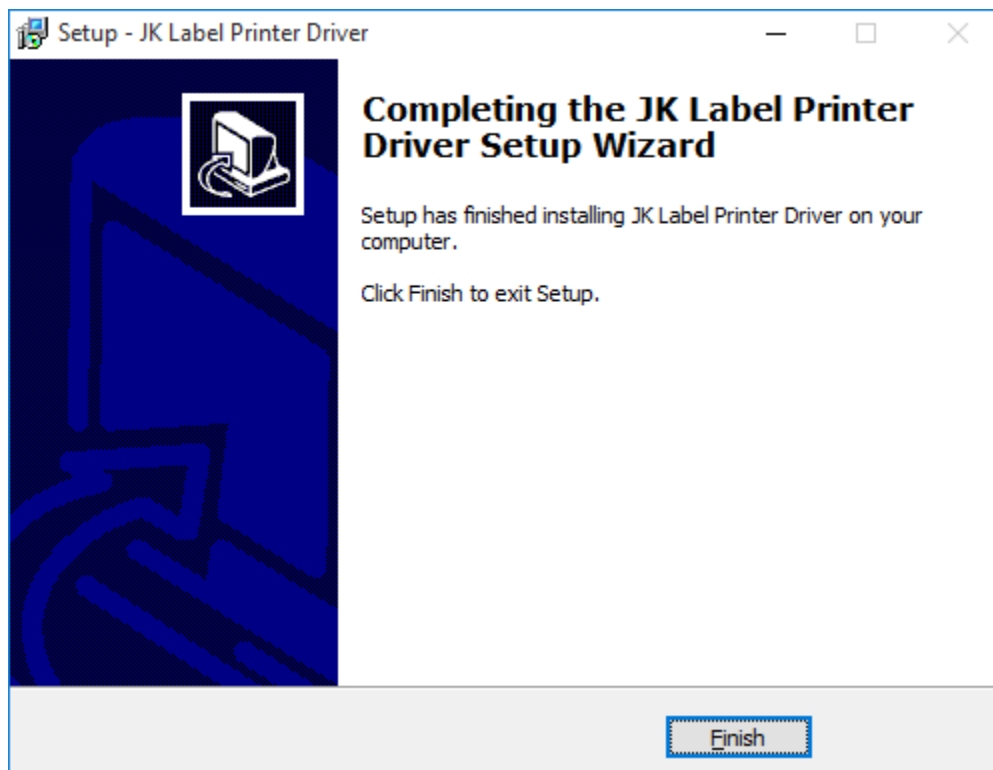
Select the language, then click "OK" .Then, it will show as below picture:



Then click “Install”.It will show as below picture:



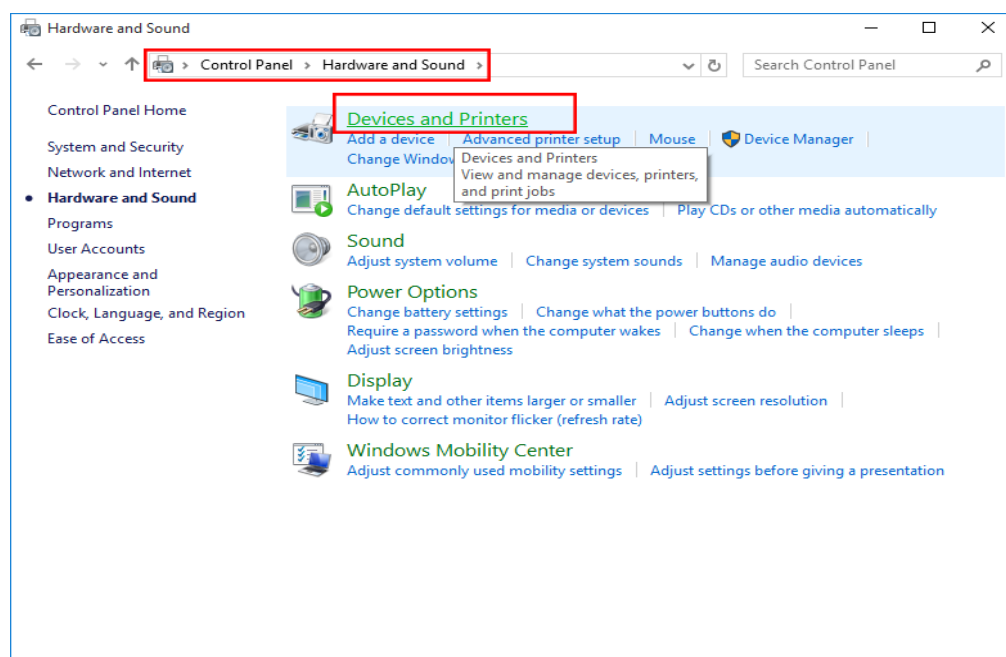
Wait till it shows the above picture, it means, the printer driver has been installed successfully, and then click "OK".



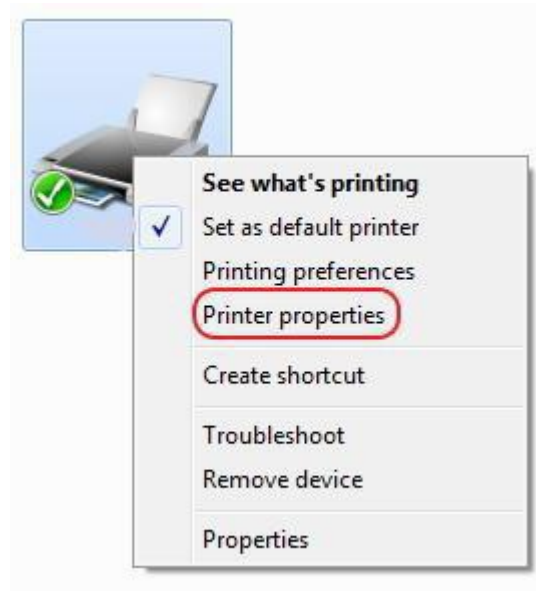
Click “Finish” to finish driver installation.

2. Printer Setup and Testing

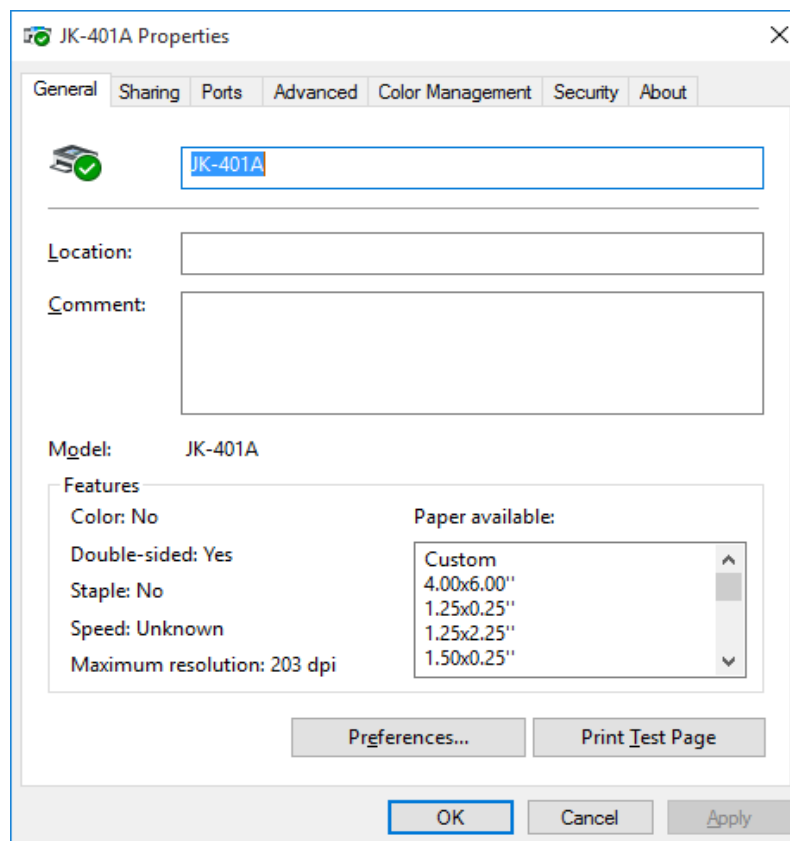
2.1 Setup Printer Properties



Follow the path shown in the above figure to find the "Devices and Printers", and then click "Devices and Printers", just as above picture



Right-Click "Label Printer" and then click "Printer properties" And then, it will show as below picture:

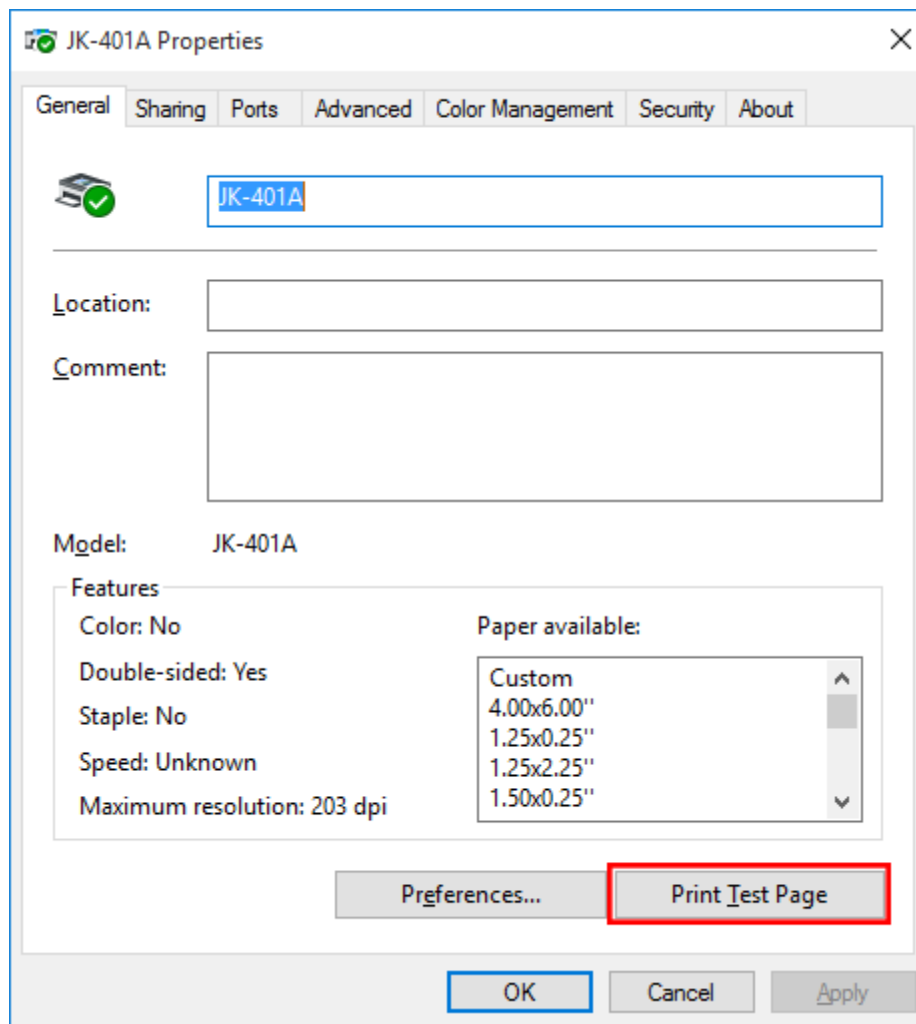


On Label Printer “General”, you could configure the printer communication port, such as Serial port, Parallel port and USB port. You also could set the paper specification, beeper etc.

After all the setting, you could start to print the testing page.

2.2 Printing Test Page

After finishing port configuration, we start to print test page. On Label Printer “General”:

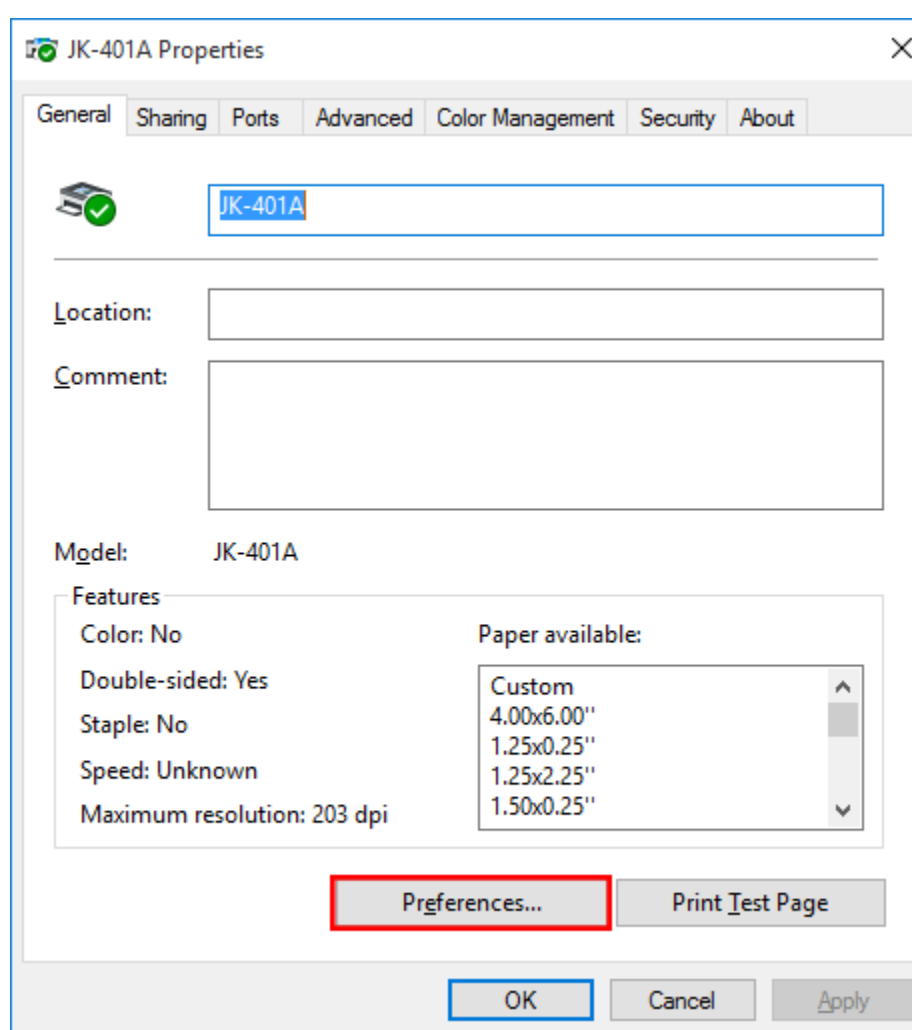


Click “Print Test Page”, the printer will print test page, which means the printer has been connected with computer successfully and the port configuration is correct.

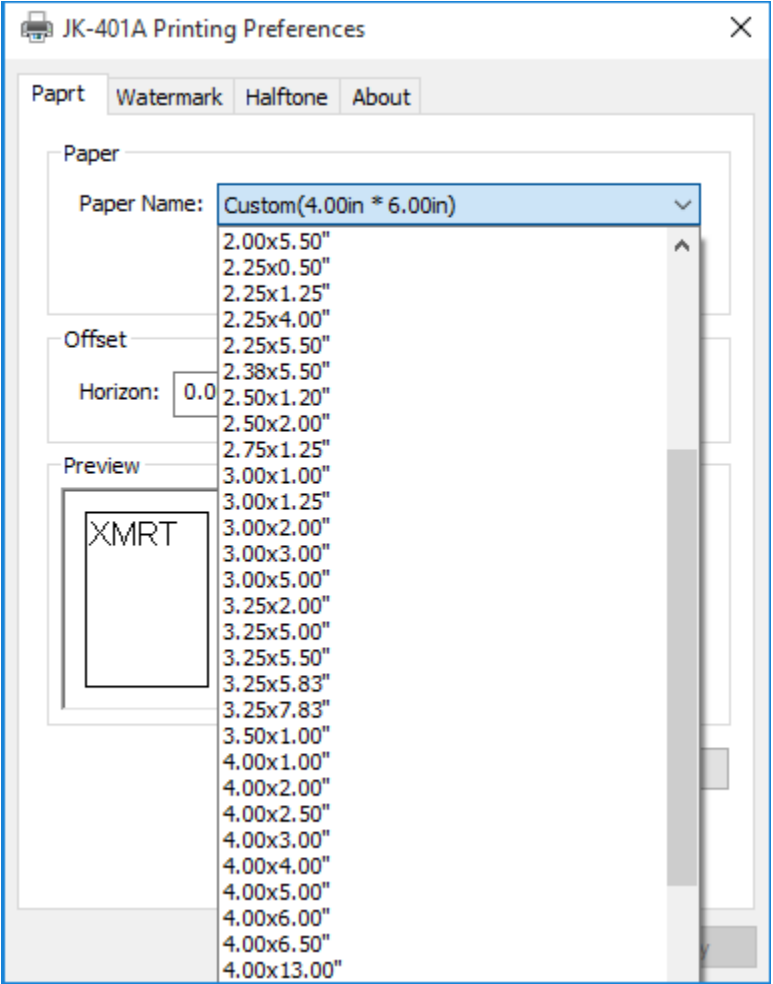
2.3 Other Properties and Function Configuration

You could set the paper specification etc., please refer to the follows:

Select the printer properties, click on "Print preferred page", enter the page and print settings interface, as shown in the following figure.



Click the Paper Name drop-down box to select the paper size to use.



Click “Manage” to enter the custom paper interface.

JK-401A Printing Preferences

Paprt Watermark Halftone About

Paper

Paper Name: Custom(4.00in * 6.00in) Manage

Offset

Horizon: 0.00 in Vertical: 0.00 in

Preview

Rotate

Effect

Advanced

OK Cancel Apply

Paper Manage

Custom Paper List

kincan Delete

Custom Paper Info

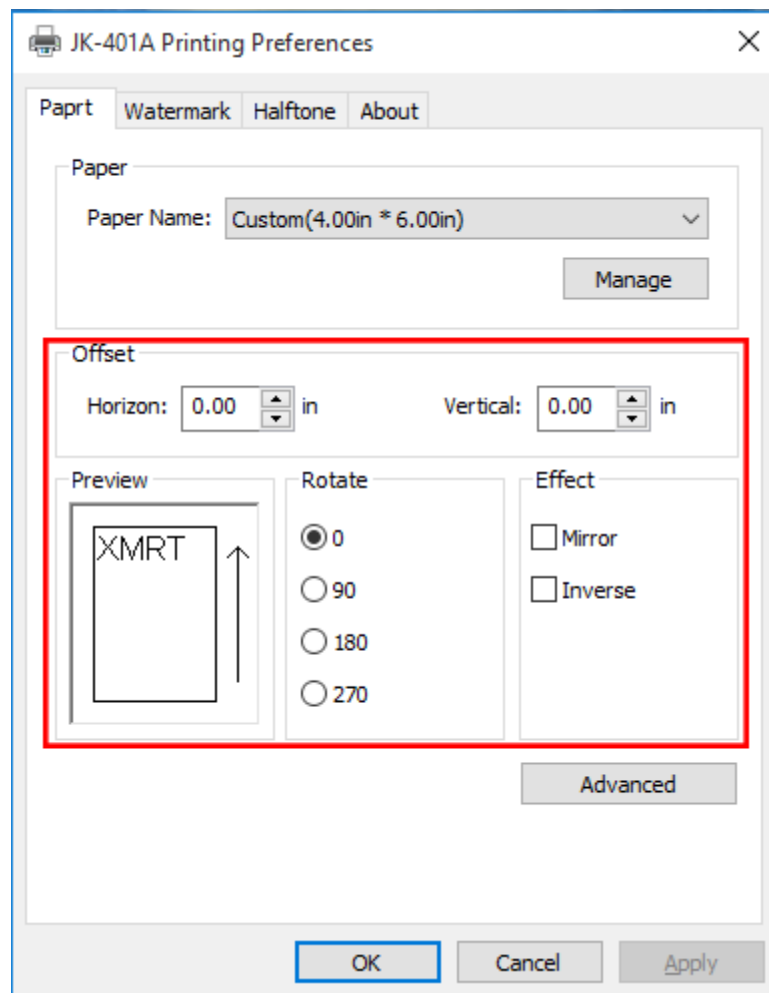
Paper Name: kincan Save

Paper Width: 2.00 [0.2- 7.0 in]

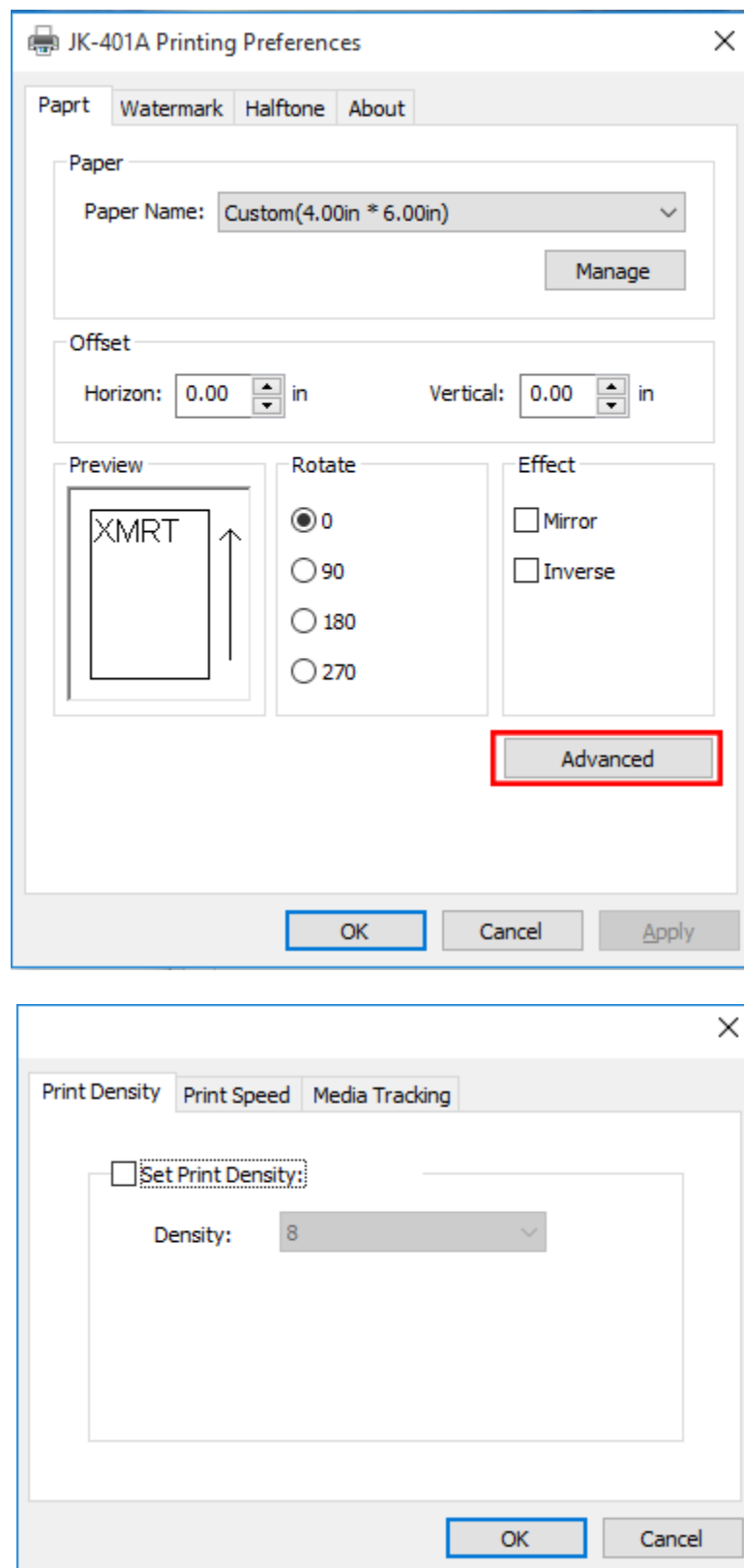
Paper Length: 2.00 [0.2 - 90.0 in]

OK Cancel

Offset sets horizontal and vertical margins. Rotate to print in different directions.



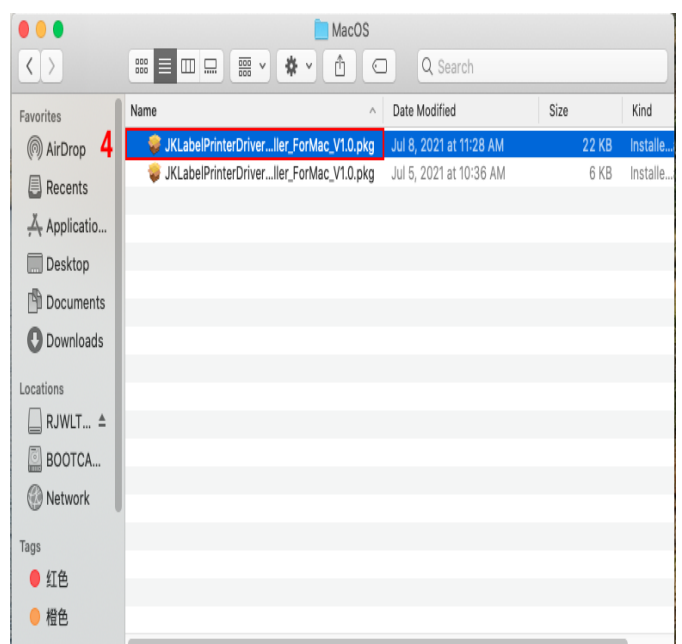
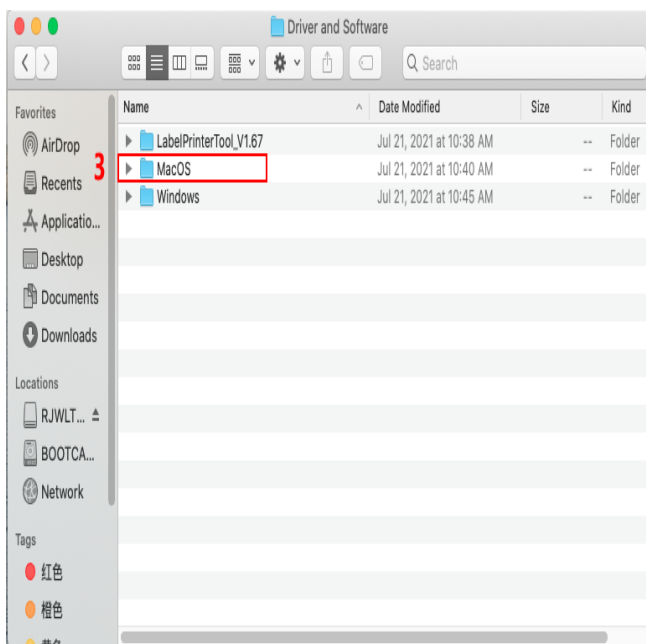
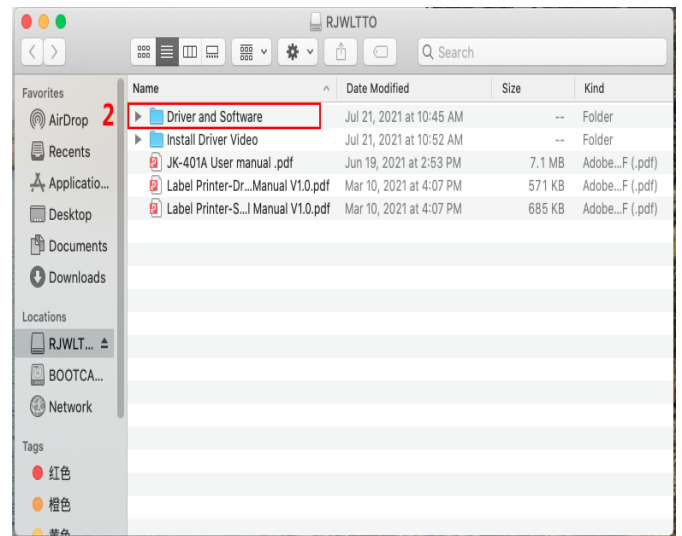
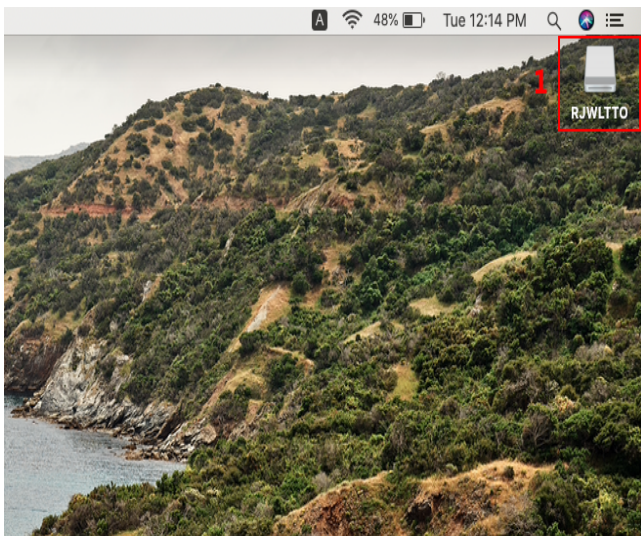
Click Advanced Settings to enter the Set Print Density and Set Print Speed screen as shown in the following figure.



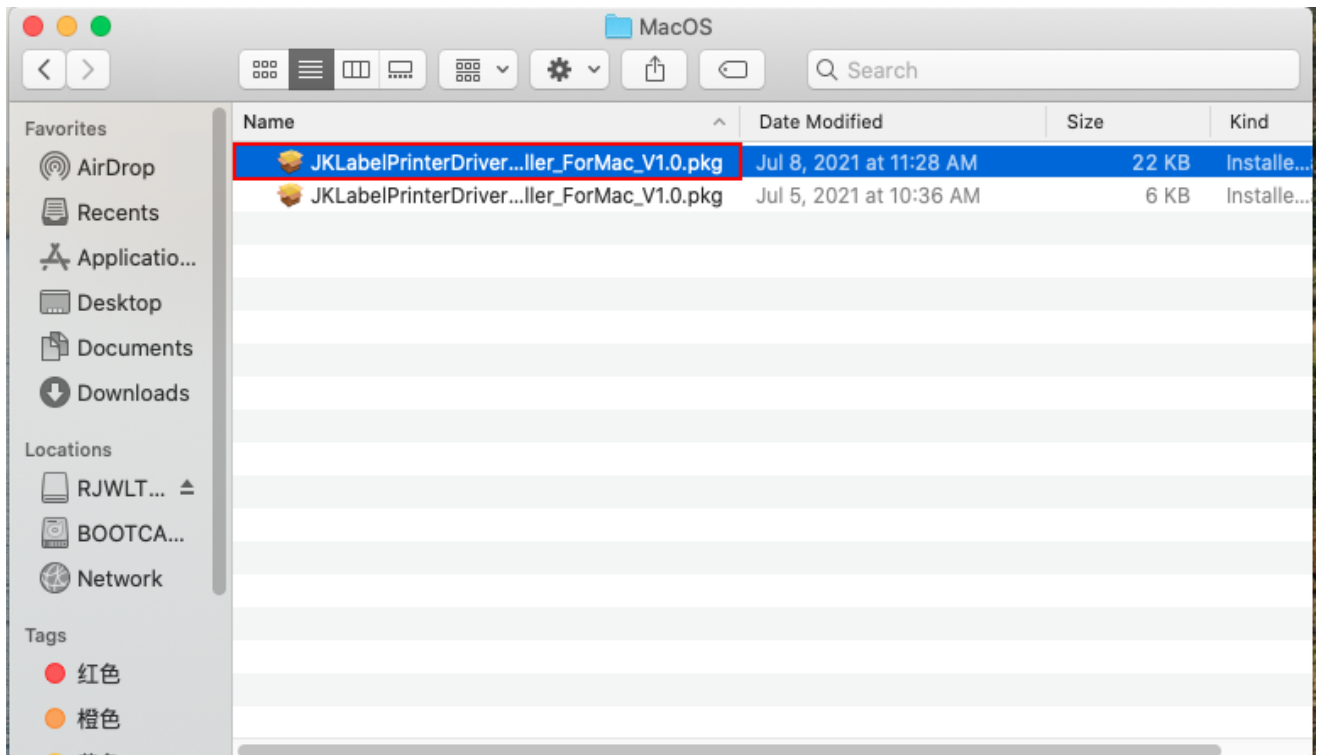
MAC PRINTING SETUP FOR MAC OS

Please insert the included USB into your computer. A flash drive icon will usually appear on the desktop. If a dialog box does not appear, open Finder and select the flash drive on the left side of the window.

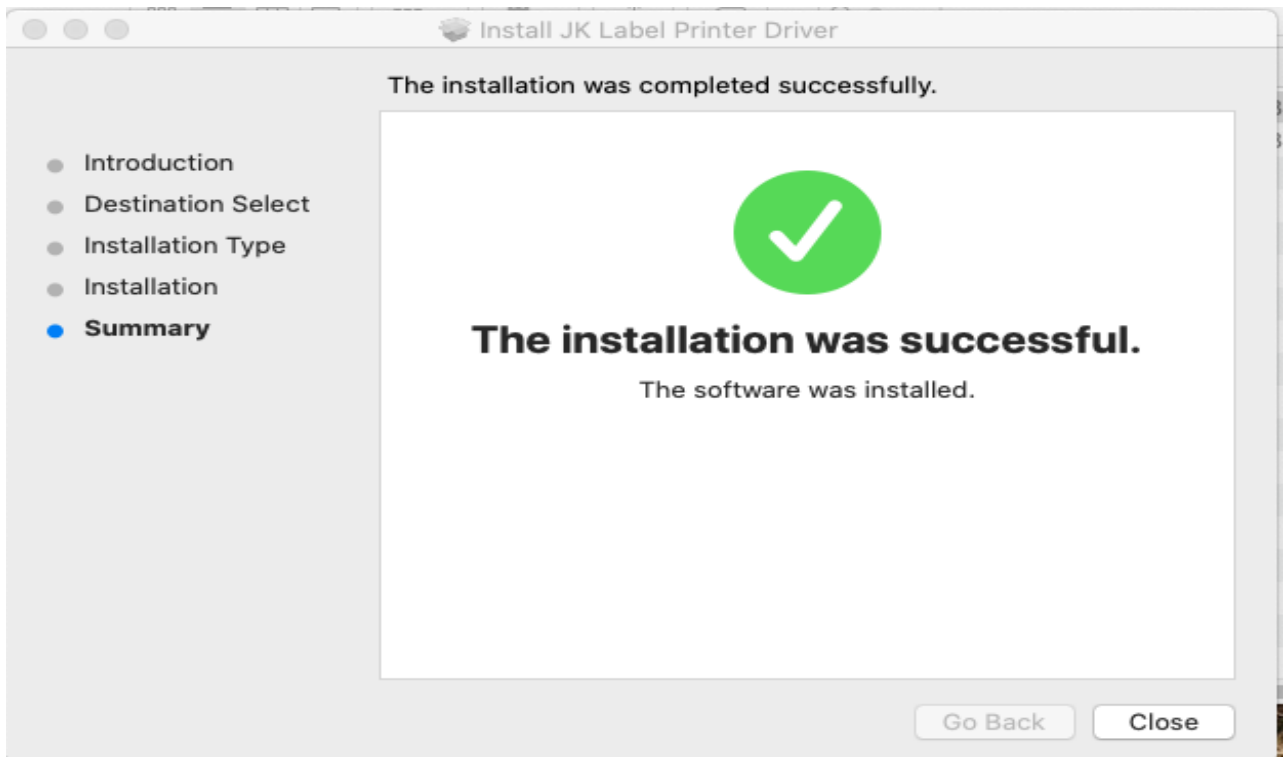
Double-click the installation disk named "RJWLTT0", and find the MAC printer driver file "JKLabelPrinterDriverInstaller_ForMac_V1.0.pkg" as shown in the figure below.



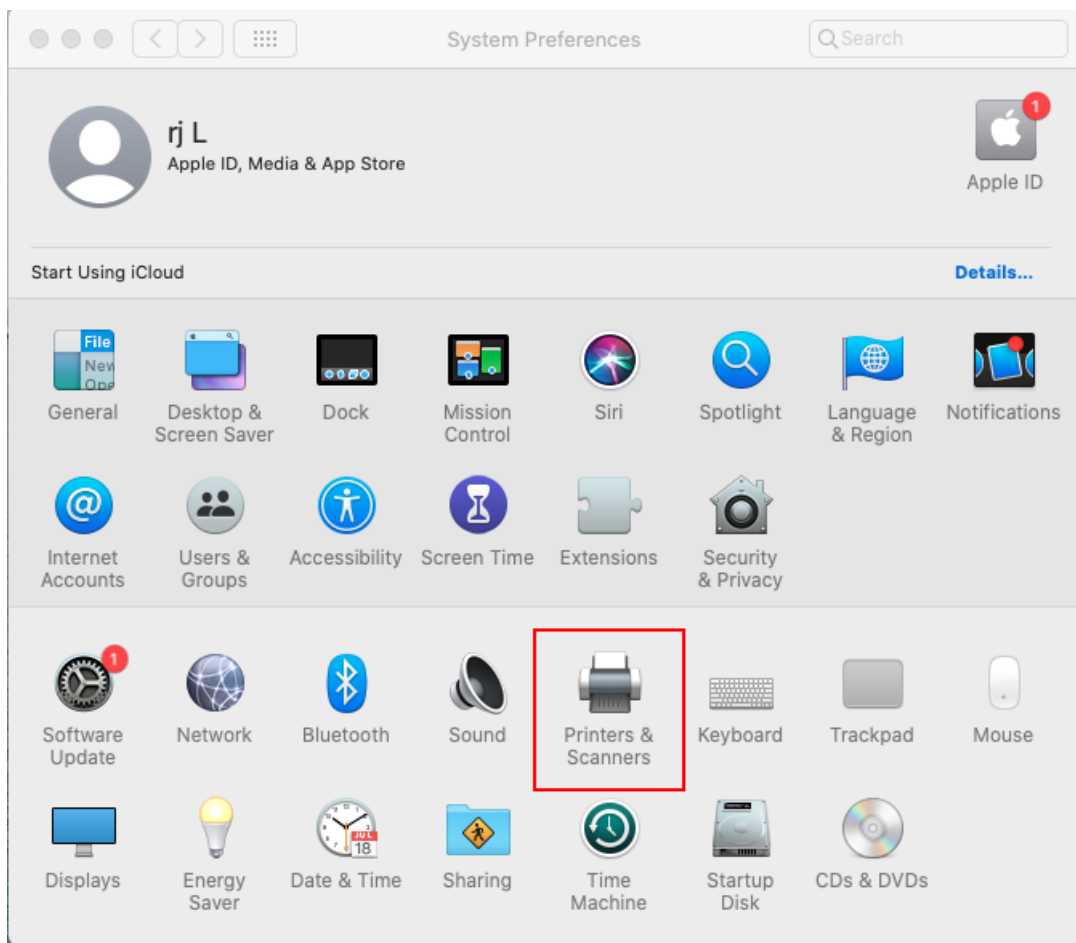
Double click "JKLabelPrinterDriverInstaller_ForMac_V1.0.pkg" to begin to install driver.



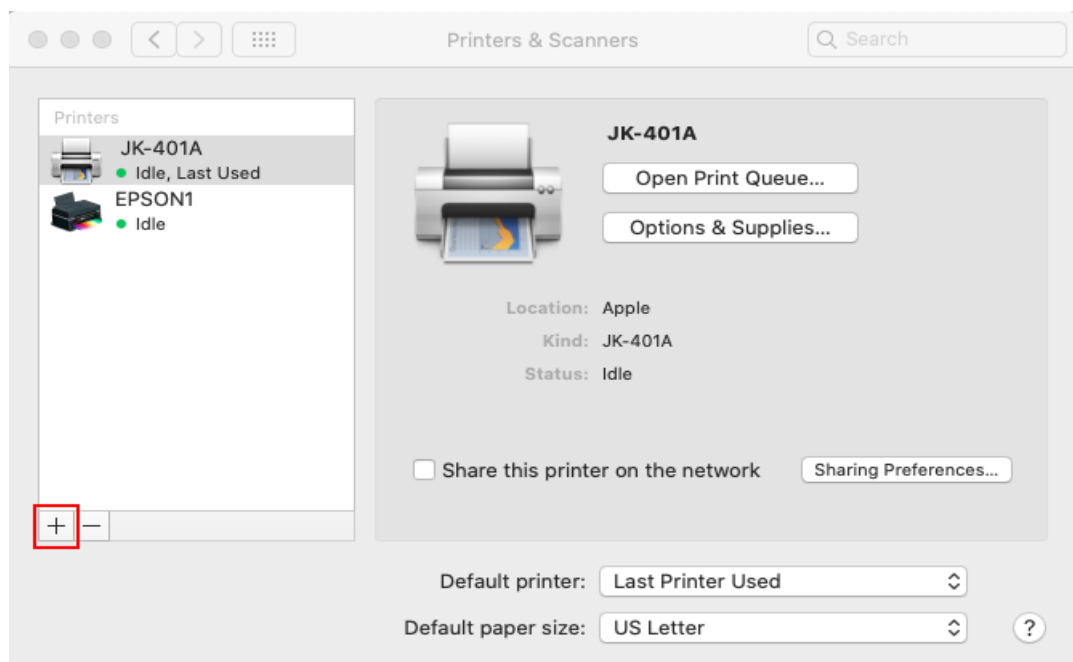
Follow the installation steps until you see "The installation was successful" window



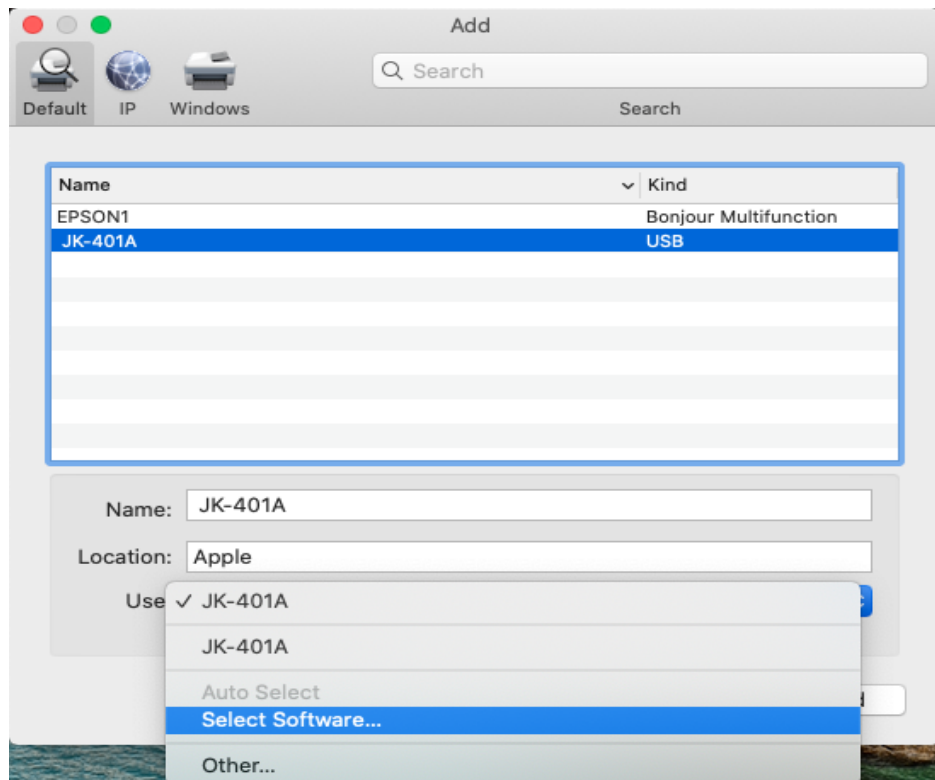
Open "System Preferences" and click on "Printers and Scanners".



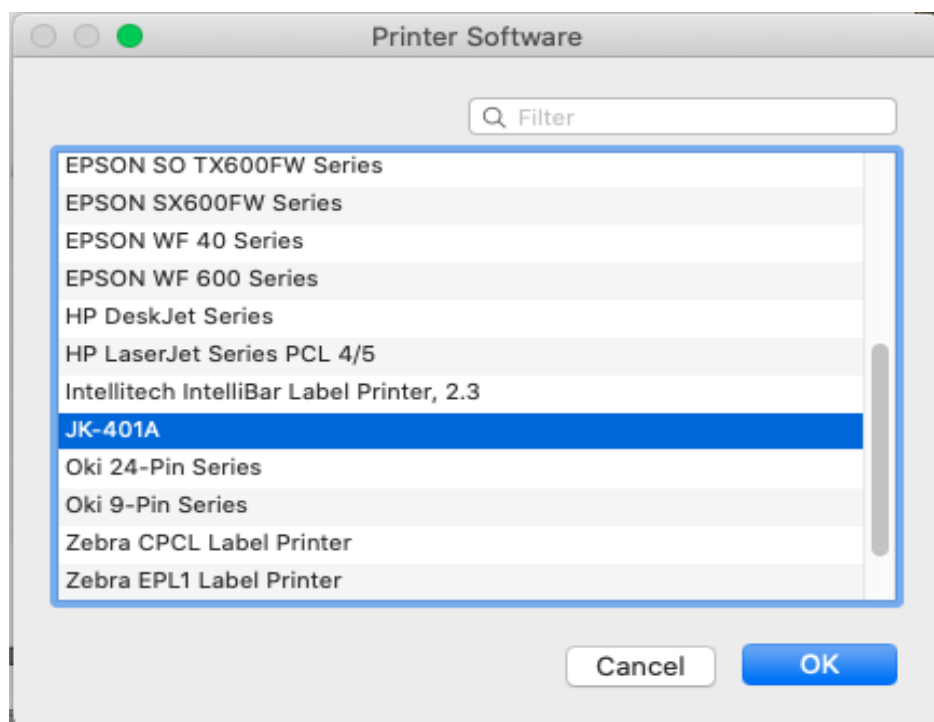
Click "+" to add a new printer.



Click on "JK-401A" (or other model of RJWLTTO) , and choose "Select Software" in the drop down menu.



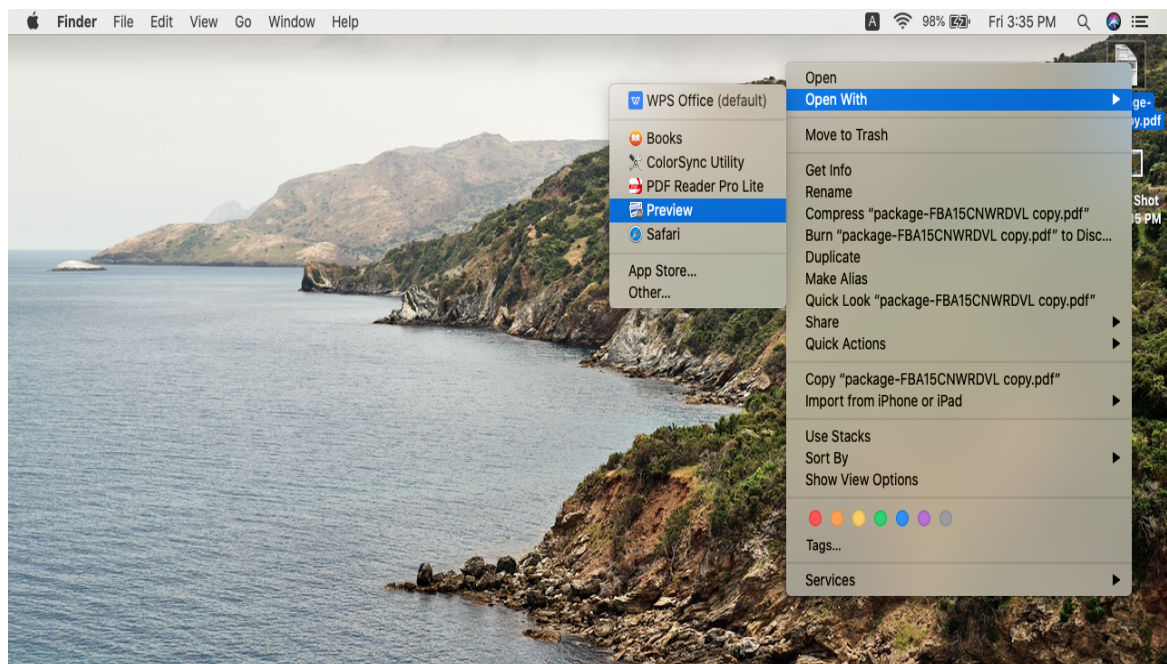
Input "JK-401A" to search and choose, the click "OK".



Click on "Add" to finish .(if you see a warning windows, click "repair" to continue).

HERI'S HOW TO PRINT YOUR LABELS:

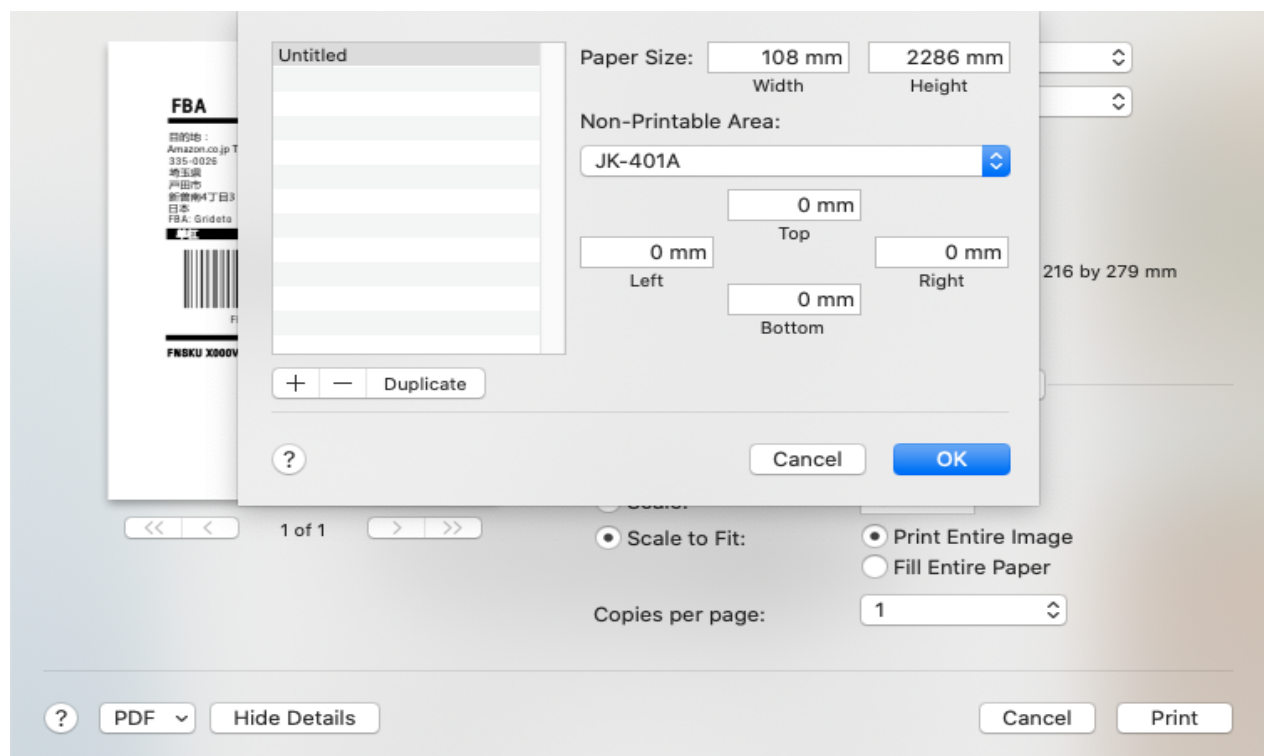
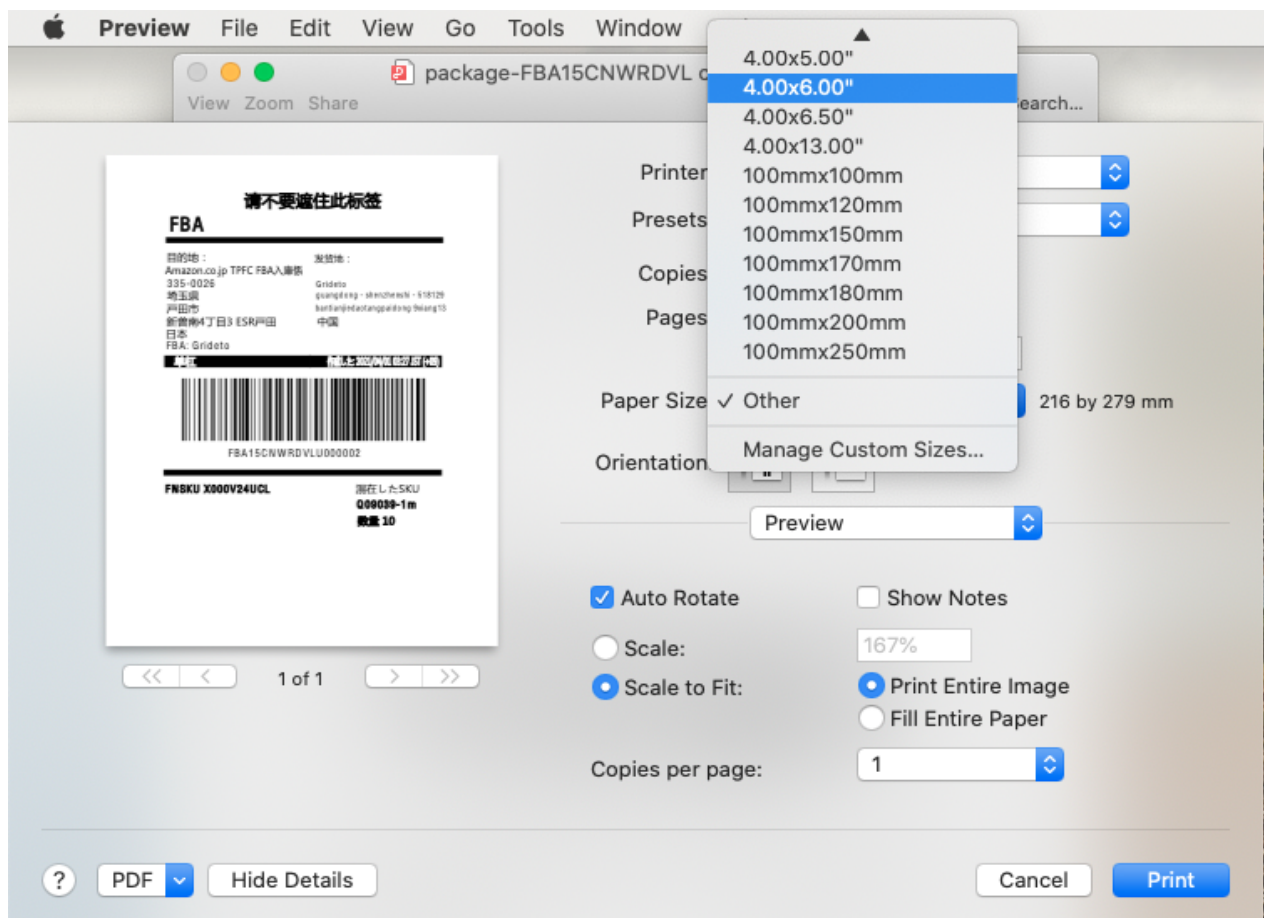
Open the PDF in Preview, As shown in the figure below.



From the top panel, select File > Print



Click on the Paper Size drop-down box to select the paper size you currently need to use and customize the paper size settings.



Select the printer features settings for print speed, print concentration, etc

Printer: JK-401A

Presets: Default Settings

Copies: 1

Pages: All

Paper Size: 4.00x6.00" 102 by 152 mm

Orientation: Portrait

Printer Features

Print Speed: 5.00 in/sec

Darkness: 8

Horizontal: 0

Vertical: 0

PrintMode: Default

1 of 1

Cancel Print

Printer: JK-401A

Presets: Default Settings

Copies: 1

Pages: All

Paper Size: 4.00x6.00" 102 by 152 mm

Orientation: Portrait

Printer Features

Print Speed: 5.00 in/sec

Darkness: 8

Horizontal: 0

Vertical: 0

PrintMode: Default

1 of 1

Cancel Print

Settings are complete, click Print.

Happy Printing !